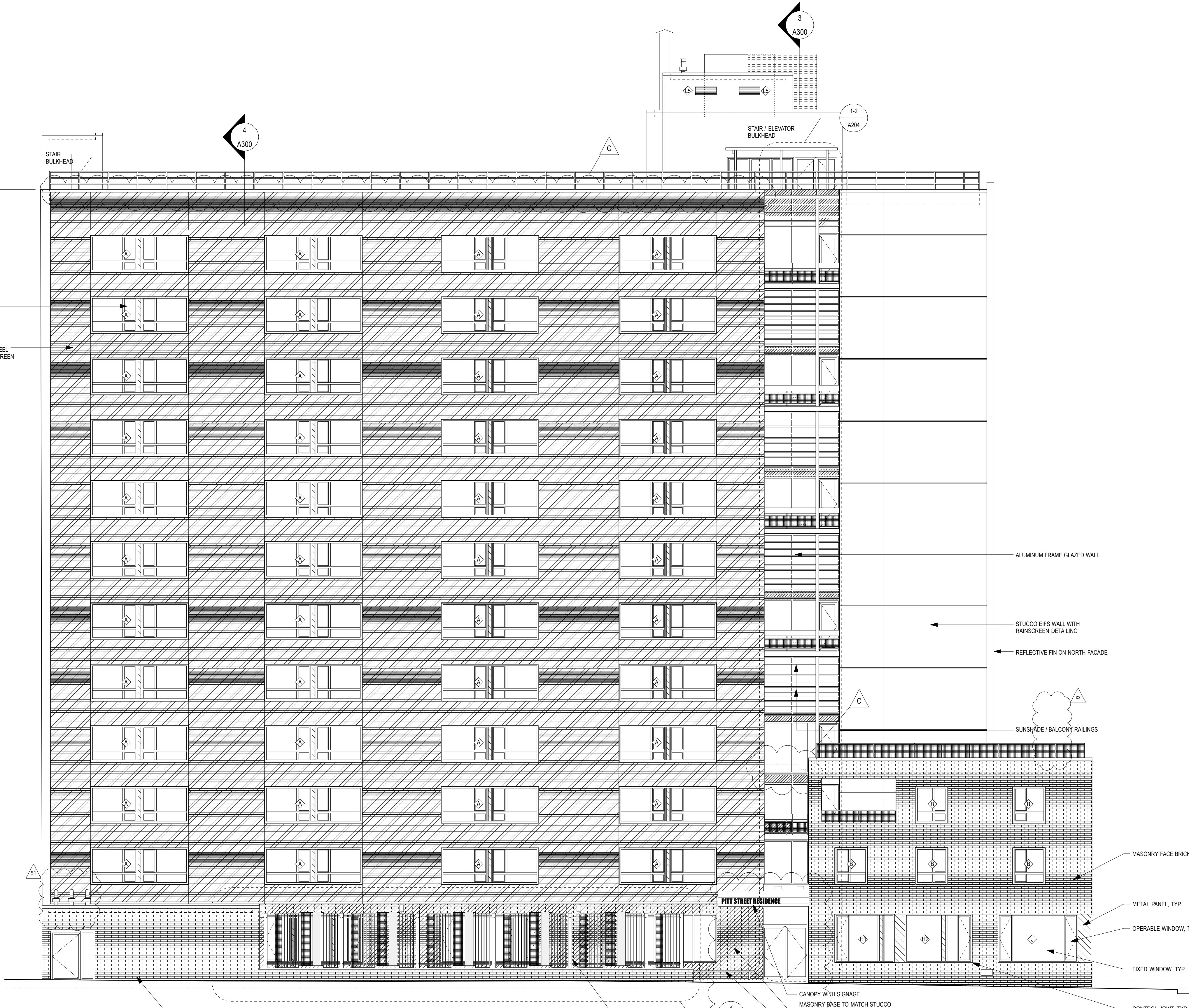
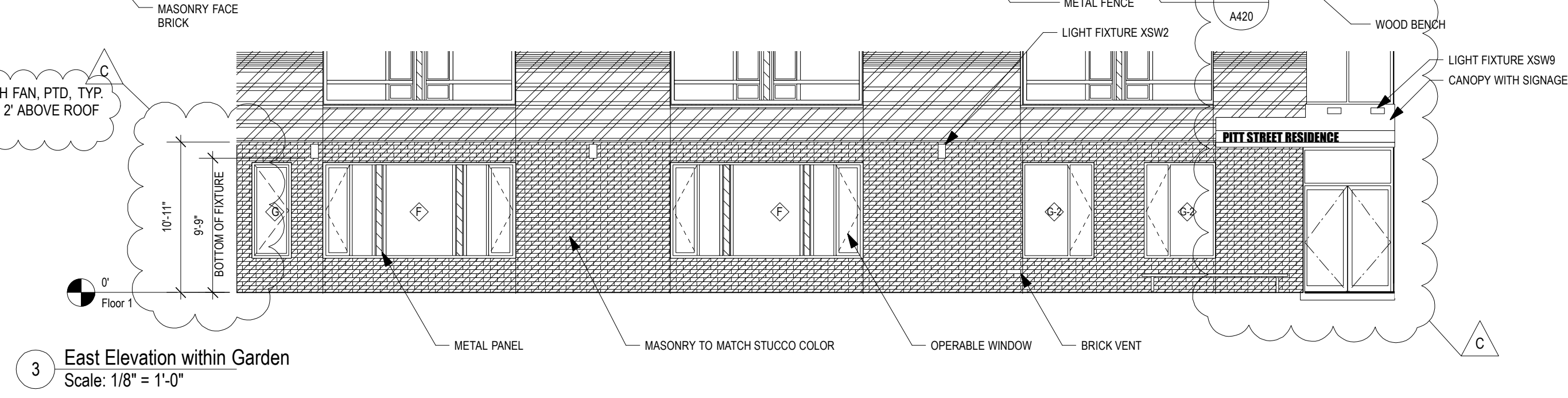
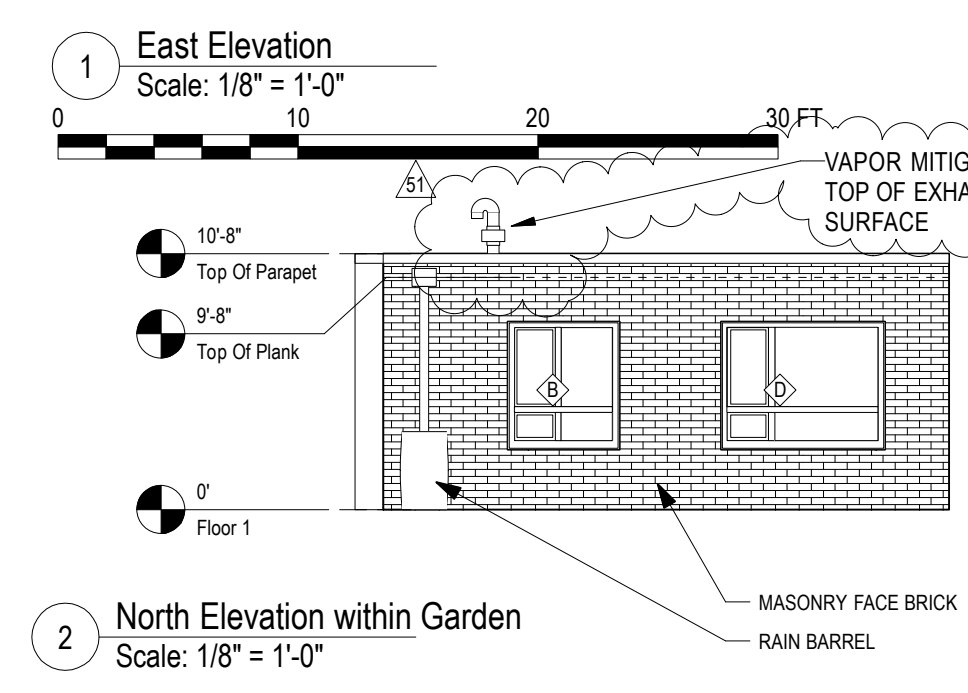


- 128'-8" Top Of Elevator Bulkhead
- 120'-1" Top Of Stair Bulkhead
- 115'-7" Top Of Railing
- 110'-9" Top Of Parapet
- 113'-0" Roof
- 99'-8" Floor 12
- 90'-9" Floor 11
- 82'-0" Floor 10
- 73'-3" Floor 9
- 64'-6" Floor 8
- 55'-9" Floor 7
- 47" Floor 6
- 38'-3" Floor 5
- 29'-6" Floor 4
- 20'-9" Floor 3
- 12" Floor 2
- 0' (Elev. 16-1 1/4") Floor 1
- Grade



- ALUMINUM FRAME GLAZED WALL
- STUCCO EIFS WALL WITH RAINSCREEN DETAILING
- REFLECTIVE FIN ON NORTH FACADE
- SUNSHADE / BALCONY RAILINGS
- MASONRY FACE BRICK
- METAL PANEL, TYP.
- OPERABLE WINDOW, TYP.
- FIXED WINDOW, TYP.
- CONTROL JOINT, TYP.



- MATERIAL LEGEND**
- EIFS
 - STAINLESS STEEL
 - METAL PANEL
 - BRICK, TYPE A
 - BRICK, TYPE B

Architects:
Kiss + Cathcart, Architects
 44 Court Street, Tower C
 Brooklyn, NY 11201
 (718) 237-2786 phone / (718) 237-2025 fax

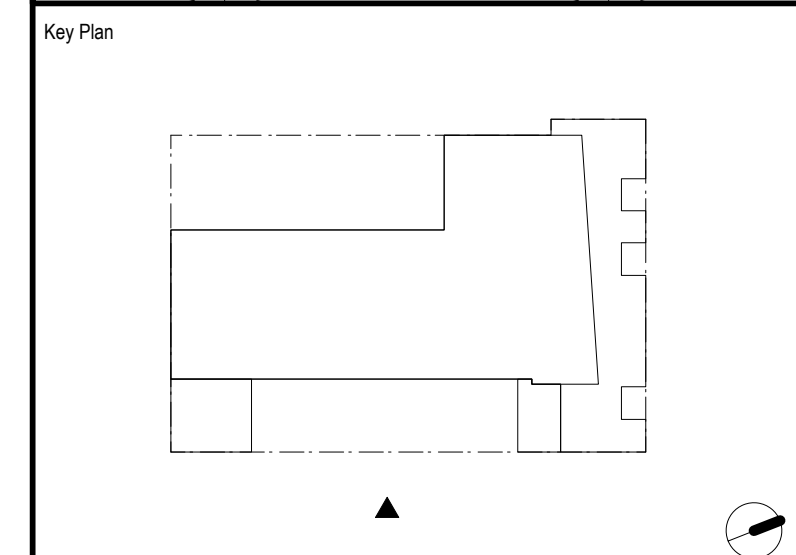
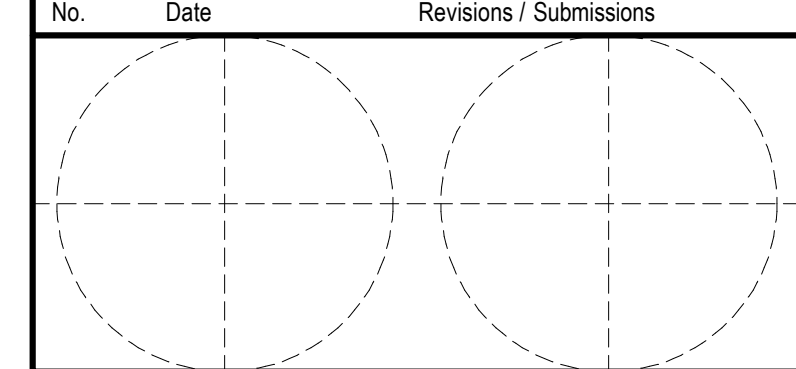
MEP Engineers:
Goldman Copeland Associates
 520 Eighth Avenue
 New York, NY 10018
 (212) 868-4660 phone / (212) 868-4680 fax

Structural Engineers:
Robert Silman Associates
 88 University Place
 New York, NY 10003
 (212) 620-7970 phone / (212) 620-8157 fax

Landscape:
Donna Walcavage Landscape and Urban Design
 212 Hicks Street
 Brooklyn, NY 11201
 (718) 834-0224 phone / (718) 834-9102 fax

Lighting:
AWA Architectural Lighting Designers
 504 LaGuardia Place, 5th Floor
 New York, NY 10012
 (212) 473-9797 phone / (212) 473-9708 fax

No.	Date	Revisions / Submissions
Δ1	03/26/09	COORDINATION/CLARIFICATION
Δ2	09/18/07	SK-A15: REVISED FLOOR ELEVATION
Δ3	12/06/06	CONTRACT DOCUMENT
Δ4	11/17/06	BID ADDENDUM
Δ5	10/06/06	BID ADDENDUM
Δ6	09/18/06	BID DOCUMENT 100%
Δ7	08/21/06	CONSTRUCTION DOCUMENT 100%



Project Title
**The Pitt Street Residence
 Common Ground Community**
 133 Pitt Street
 New York, NY
 10002

Drawing Title
**Exterior Elevation
 East**

Date: 09/18/06
 Scale: 1/8"=1'-0"

Drawn By: SA
 Drawing No.: **A-200**

Reviewed By: CC