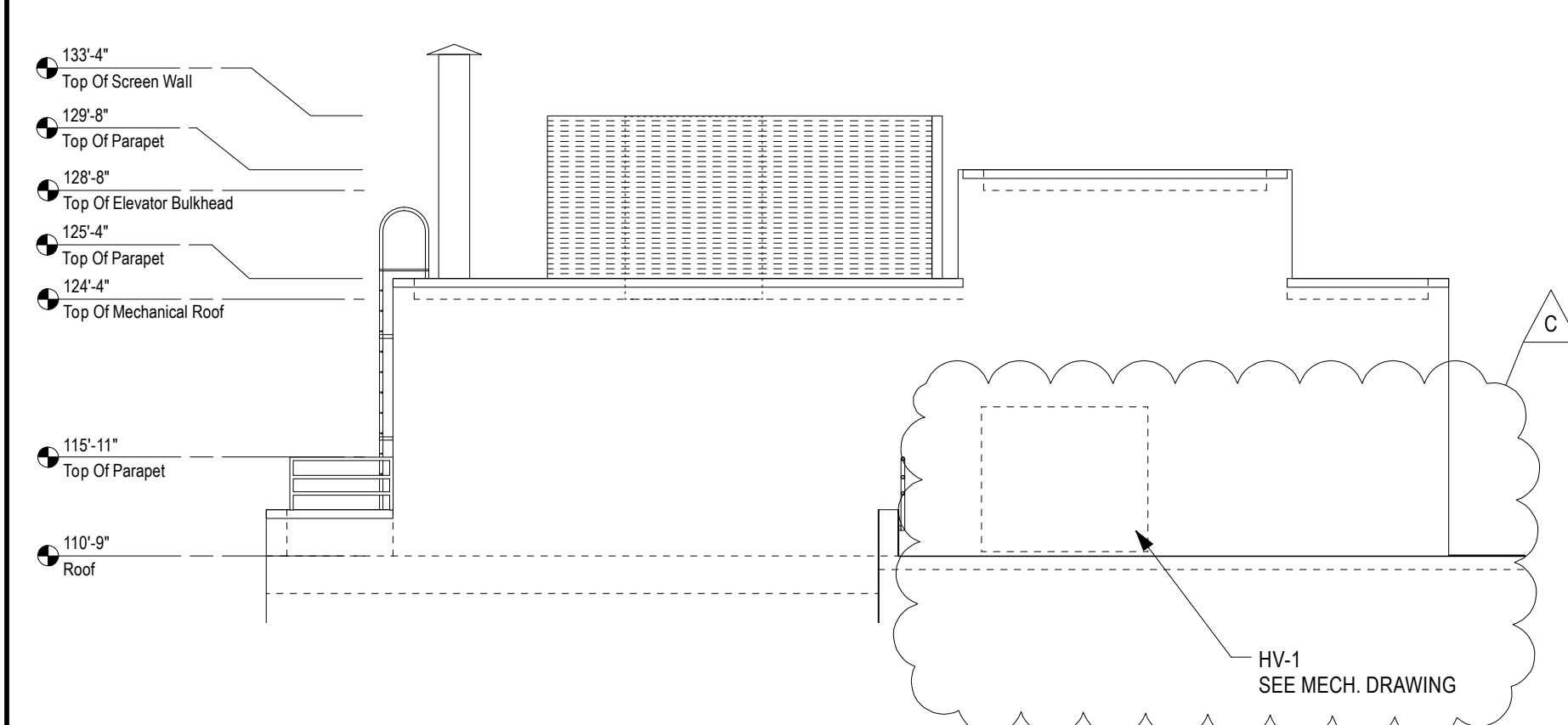
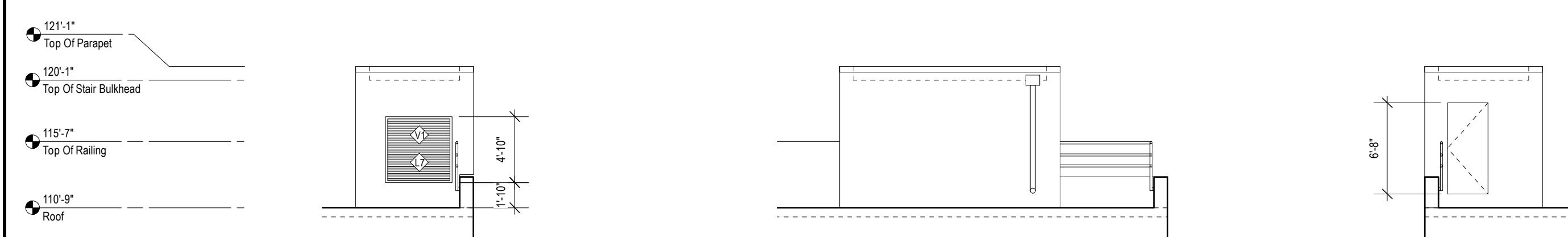


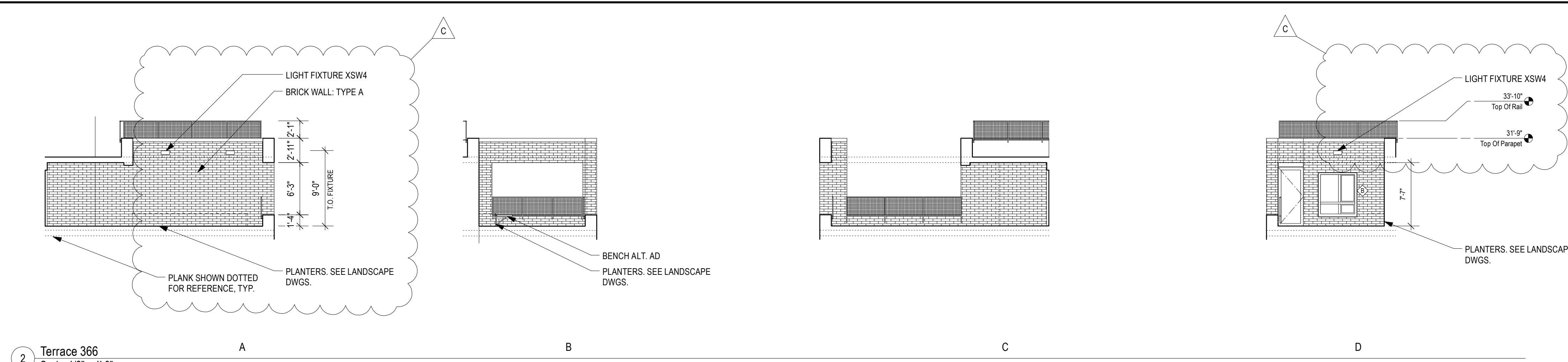
1 South Elevation: Partial  
Scale: 1/8" = 1'-0"



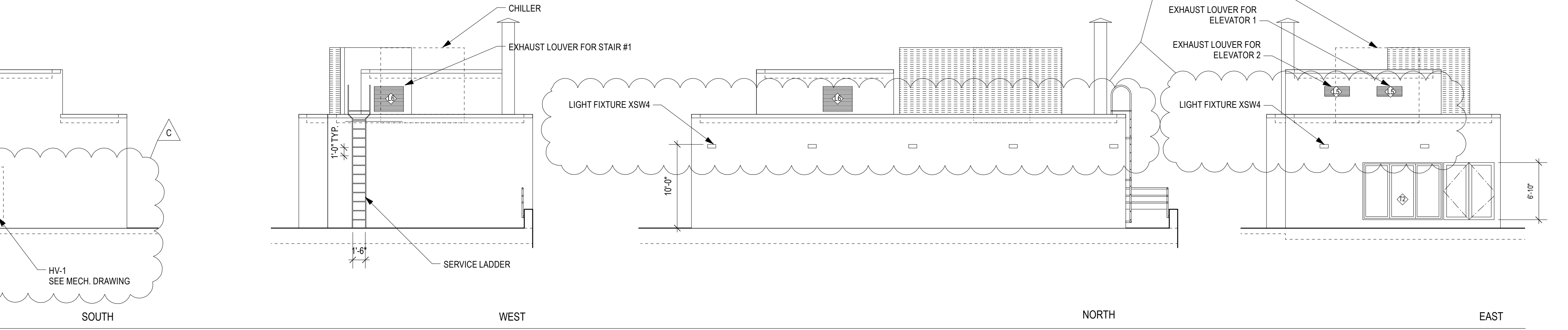
3 Elevator Bulkhead  
Scale: 1/8" = 1'-0"



4 Stair #2 Bulkhead  
Scale: 1/8" = 1'-0"



2 Terrace 366  
Scale: 1/8" = 1'-0"



SOUTH WEST NORTH EAST

Architects:  
**Kiss + Cathcart, Architects**  
44 Court Street, Tower C  
Brooklyn, NY 11201  
(718) 237-2786 phone / (718) 237-2025 fax

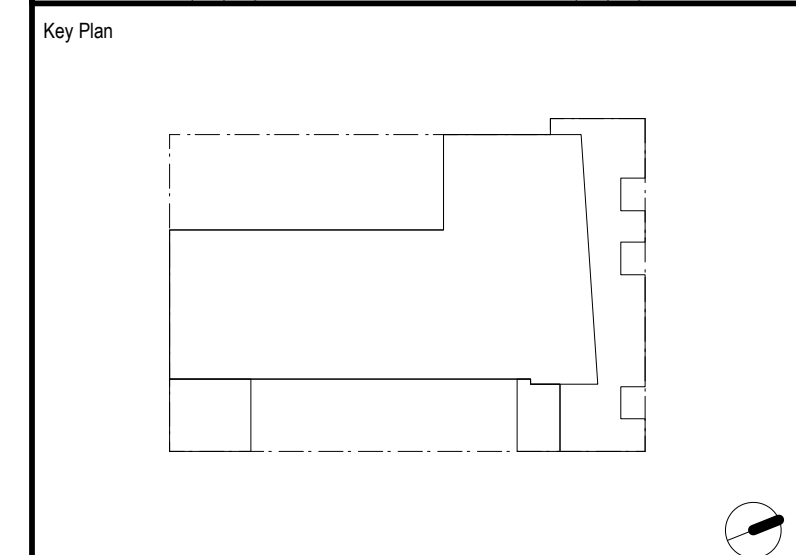
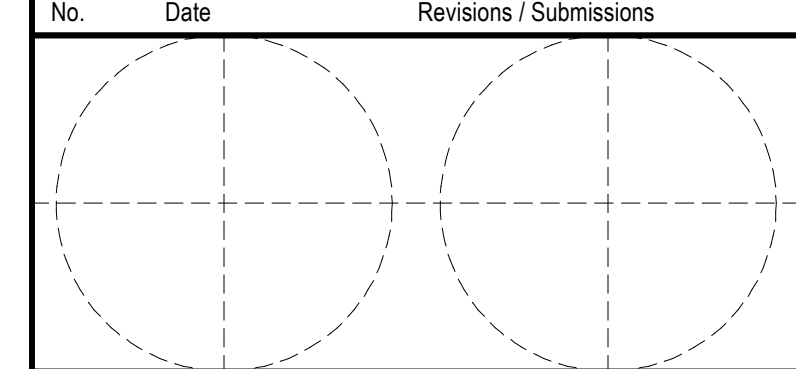
MEP Engineers:  
**Goldman Copeland Associates**  
520 Eighth Avenue  
New York, NY 10018  
(212) 868-4660 phone / (212) 868-4680 fax

Structural Engineers:  
**Robert Silman Associates**  
88 University Place  
New York, NY 10003  
(212) 620-7970 phone / (212) 620-8157 fax

Landscape:  
**Donna Walcavage Landscape and Urban Design**  
212 Hicks Street  
Brooklyn, NY 11201  
(718) 834-0224 phone / (718) 834-9102 fax

Lighting:  
**AWA Architectural Lighting Designers**  
504 LaGuardia Place, 5th Floor  
New York, NY 10012  
(212) 473-9797 phone / (212) 473-9708 fax

No.	Date	Revisions / Submissions
1	09/18/07	SK-A17: REVISED FLOOR ELEVATION
2	12/06/06	CONTRACT DOCUMENT
3	11/17/06	BID ADDENDUM
4	10/06/06	BID ADDENDUM
5	09/18/06	BID DOCUMENT 100%
6	08/21/06	CONSTRUCTION DOCUMENT 100%



Project Title  
**The Pitt Street Residence  
Common Ground Community**  
133 Pitt Street  
New York, NY  
10002

Drawing Title  
**MISCELLANEOUS**

Date	09/18/06	Scale	1/8"=1'0"
Drawn By	UN	Drawing No.	<b>A-203</b>
Reviewed By	SA		